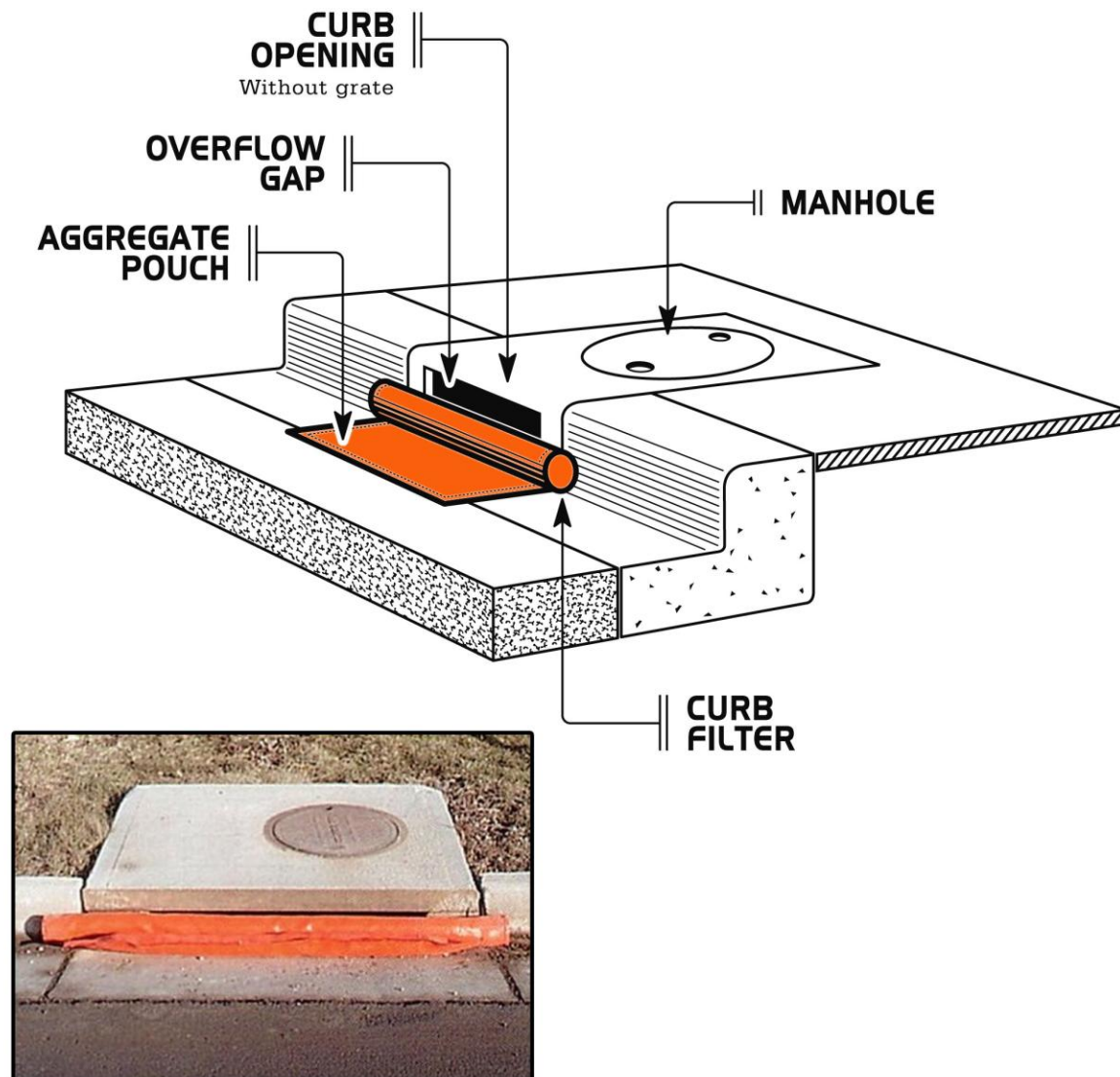
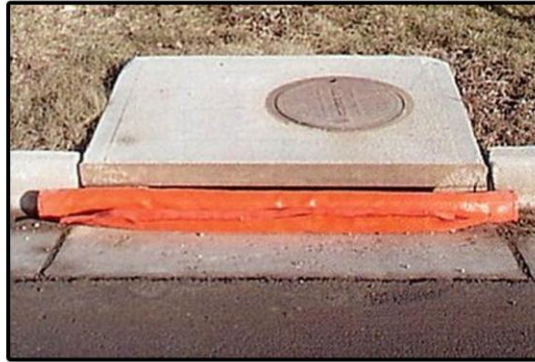


► **DANDY CURB™** ◀



► **DANDY CURB™** ◀



The Dandy Curb is made especially for curb inlets and median inlets without grates. It's designed to handle the worst that sludge-filled rainwater has to offer, filtering off sediment-laden storm waters. The suspended solids are allowed to settle out of the slowed flow and are easily captured by the Dandy Curb prior to entering the inlet. Sediment doesn't stand a chance.

Get Maximum Benefits With Dandy:

- One-of-a-kind patented design keeps silt, sediment, and debris out of storm systems
- Specially designed to quickly conform to the shape of the curb
- Built in protective overflow design
- Reduces or eliminates the need to flush or clean inlets saving time and money
- Easily seen because it's fabricated from a bright orange monofilament geotextile
- Sizes to fit any curb and inlet
- Available with optional oil absorbents
- Easy to install, maintain, inspect, and reuse

Installation:

1. Place the Dandy Curb on ground with aggregate pouch on street side near the inlet on which it will be installed.
2. Open Velcro access pouch located on the street side edge of the unit.
If using optional absorbents, place absorbent sack in pouch and push to back of pouch.
3. Fill pouch with aggregate to a level that will keep the unit in place during a rain event and create a seal between the Dandy Curb and the surface of the street.
4. Reseal Velcro access.
5. Center the unit against a curb or median inlet opening so that there is an equal length of the Dandy Curb overhanging on each side of the opening.

Maintenance:

- Remove all accumulated sediment and debris from the surface and vicinity of the unit after each storm event.
- If using optional oil absorbents, remove and replace absorbent when near saturation.